



FAXport




Version 10

UniPort Ltd.

Aug 2006

What is FAXport V10

A decorative graphic on the left side of the slide consisting of three overlapping squares: a yellow one at the top, a red one to the left, and a blue one at the bottom.

FAXport IP Fax Messaging software allows users from their desktop and anywhere on the network - to prepare, preview, send, and receive faxes.

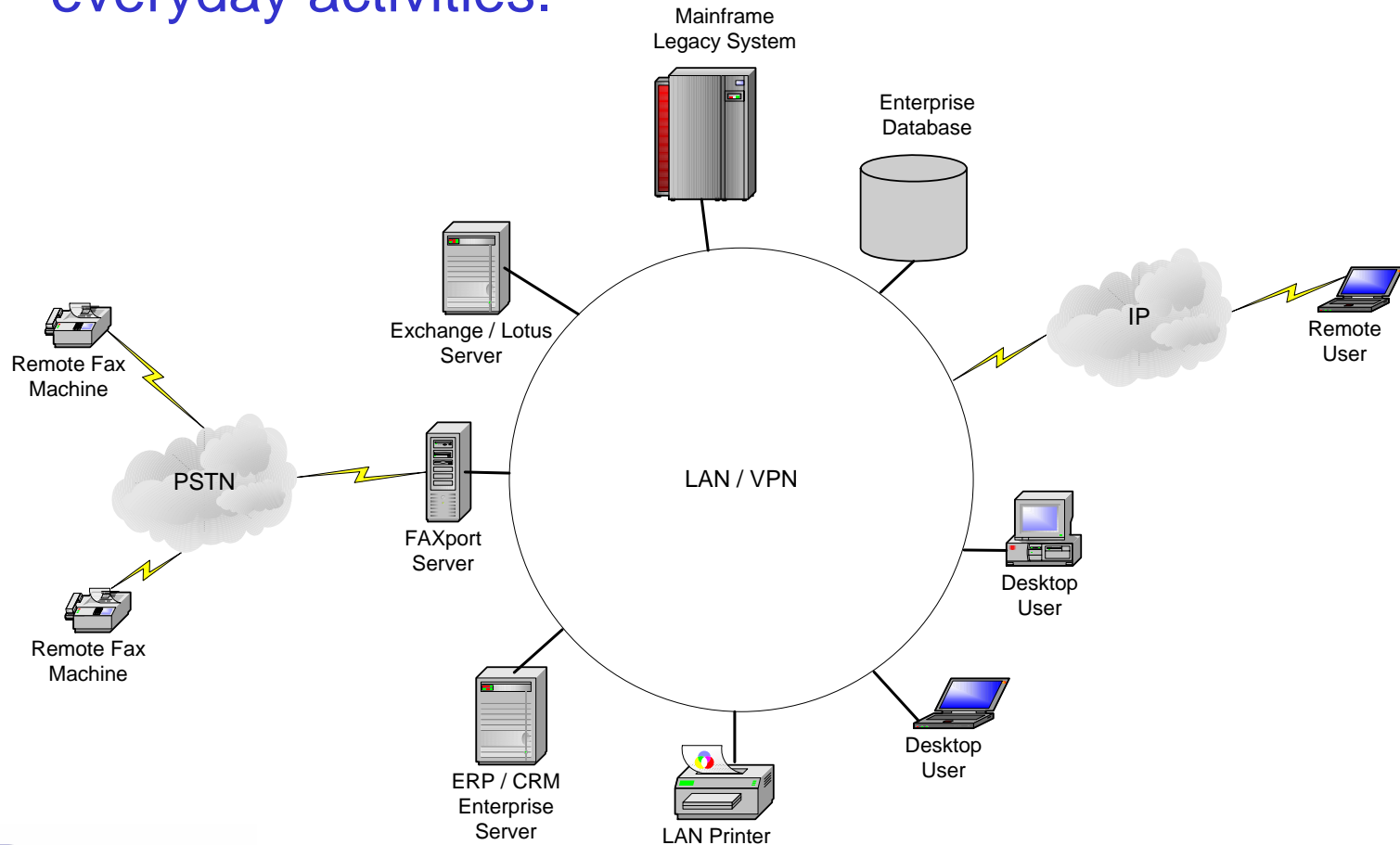
FAXport is a feature-rich technology that provides economical network faxing capabilities and improved productivity, eliminating the need for dedicated fax machines and phone lines.



FAXport Architecture



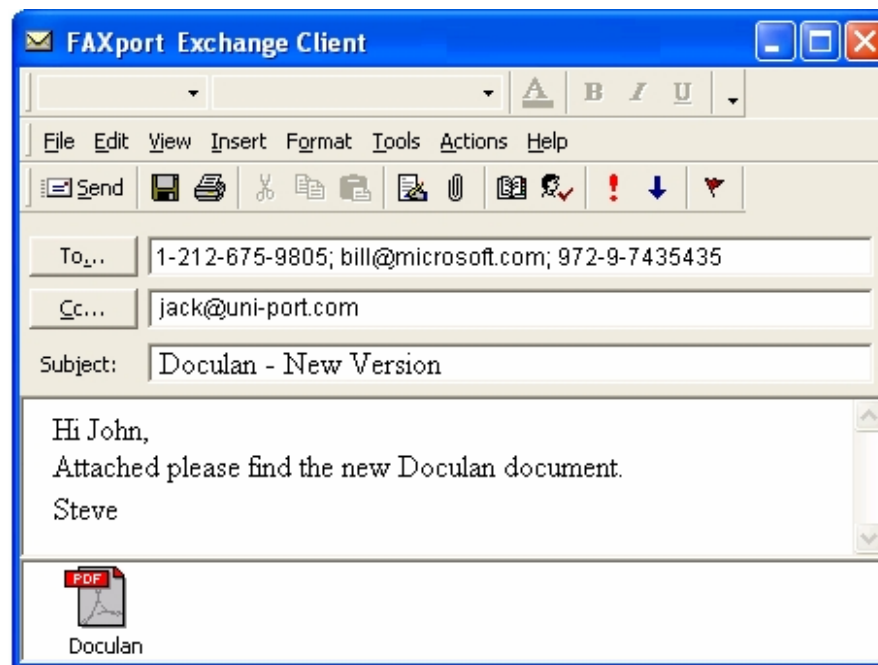
Through integrating FAXport with e-mail and the most common applications, FAXport becomes a part of everyday activities.



FAXport 4 Exchange & Lotus Notes



FAXport for Microsoft Exchange / Lotus Note, serves as a seamless fax connector / gateway that allows sending, receiving and tracking faxes directly from Outlook / Lotus client. Time and money spent on user training is saved. FAXport delivers a complete communications solution for any size enterprise.



FAXport 4 Exchange

A decorative graphic consisting of three overlapping squares: a yellow one at the top, a red one to the left, and a blue one at the bottom.

Feature

Benefit

Fax from MS Exchange

No new software to learn

Use Exchange Address books

Use your current database

Create public attachments

Share resources

Receive faxes in the Exchange Inbox ..

Open faxes as mail

View Sent faxes in the Mailbox

Easy tracking of fax jobs

FAXport 4 Exchange



Comparison table between FAXport Exchange / Lotus Notes Connector with other similar products

Topic	FAXport	Other Fax Servers
Technology	The FAXport Exchange Connector is based on a mailbox. It supports all versions of Exchange and Outlook, old and future versions.	The fax connector is installed on the Exchange server. New versions of Exchange and Outlook will require a modification in the fax server.
User Experience	Sending a fax is as simple as sending an e-mail. type the fax number in the "To" field, add attachments and "Send"	To send a fax, the user needs to enter the fax number inside a formula [fax:12345], which is not user friendly.
Languages	Full support	Partial support
Remote Users	Remote users can access FAXport, even if they are not connected to the corporate VPN.	Remote users need to access the corporate VPN to use the Fax Server.
Installation	There is no need to install software components on the Exchange server, and no need to change the scheme.	Software components have to be installed on the Exchange server, and the scheme needs to be modified.

Inbound Fax

Benefits

- ✓ **Availability** The fax is never busy.
- ✓ **Immediacy** The fax arrives with no delays.
- ✓ **Convenience** The fax arrives to the user's desktop.
- ✓ **Privacy** The fax will be seen only by the recipient.
- ✓ **Efficiency** No need to search for lost faxes...
- ✓ **Fax Forward** Faxes can be forwarded as e-mail

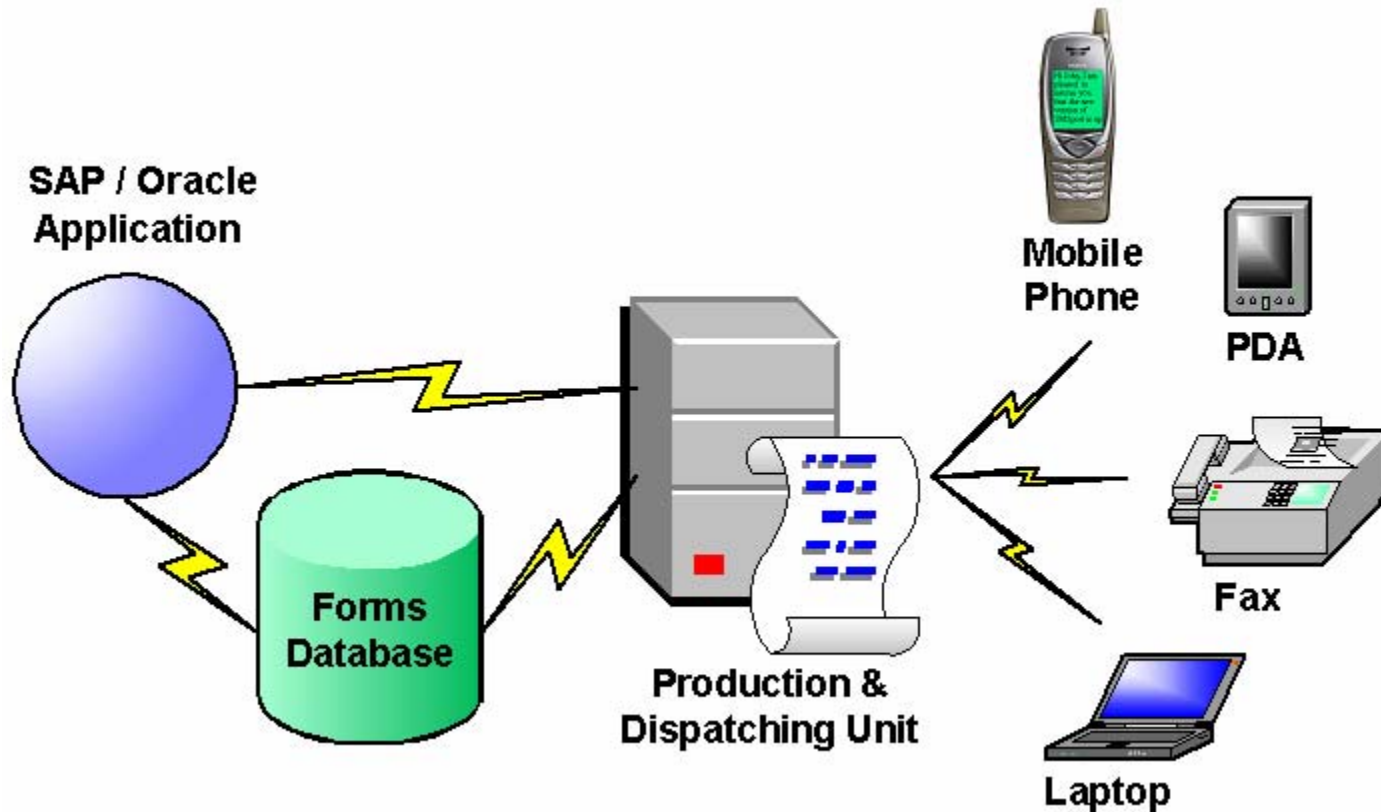


Inbound Fax

Benefits

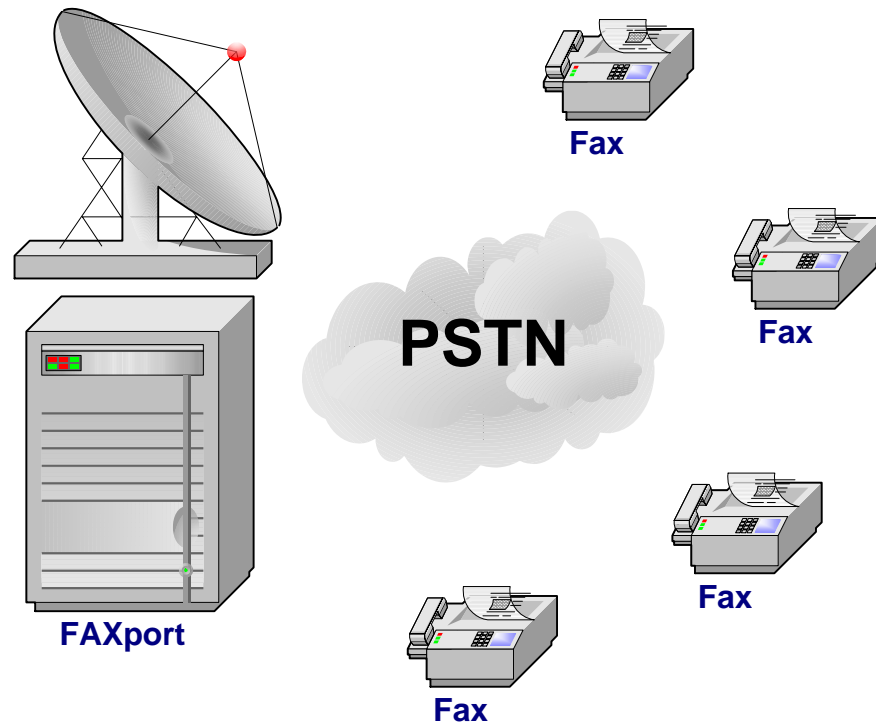
- ✓ **Location Independent** Inbound faxes can be read anywhere – as e-mail.
- ✓ **Savings** No need for paper, toner, special fax lines.
- ✓ **Electronic Archiving** Faxes can be archived as electronic document
- ✓ **Free Fax Machines** Existing fax machines are less busy.

Production Fax



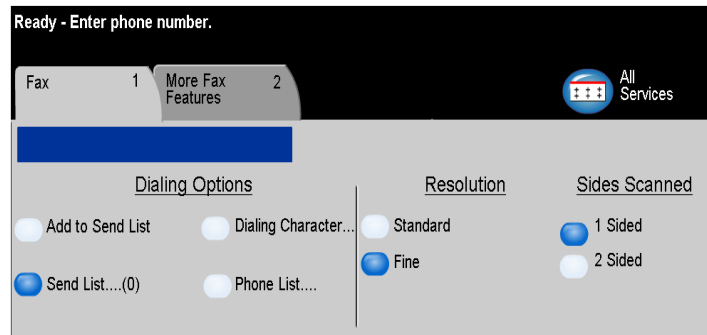
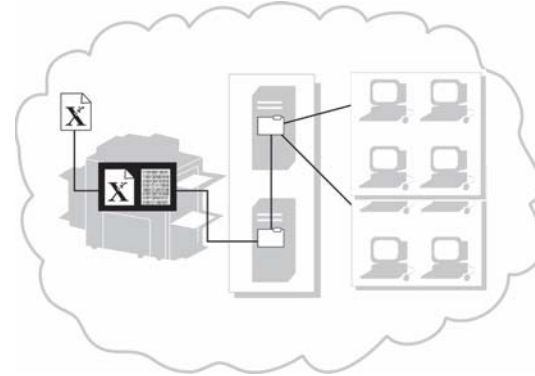
FAXport enables automatic delivery of mission-critical documents from SAP, Oracle Application, and many popular ERP and CRM systems.

Fax Broadcasting



Fax broadcasting with mail-merge capabilities is easy to use, fast, and efficient

Sending Fax from Multifunction Machines



FAXport allows sending faxes from Xerox, HP & Konica Minolta multifunction machines on the LAN - same as “scan to e-mail” function.

Send Faxes from Legacy Systems

Enterprise Application
From: AS/400, Unix,
Open VMS, Mainframe, e,
NT and DOS

Folder
Scanning

SQL

XML

FTP

POP3/
MAPI/
IMAP

Fetcher

Status Sent
to Enterprise
Application

**Fax Status
Module**

Status
From
FAXport
Server

**Production
Manager**

Sender

Mobile
PDA

SMS

MAPI

SMTP

FAXport
Server

**Forms &
Template
Data Base**

**Fax Merging
Module**

**Final TIF
Document**

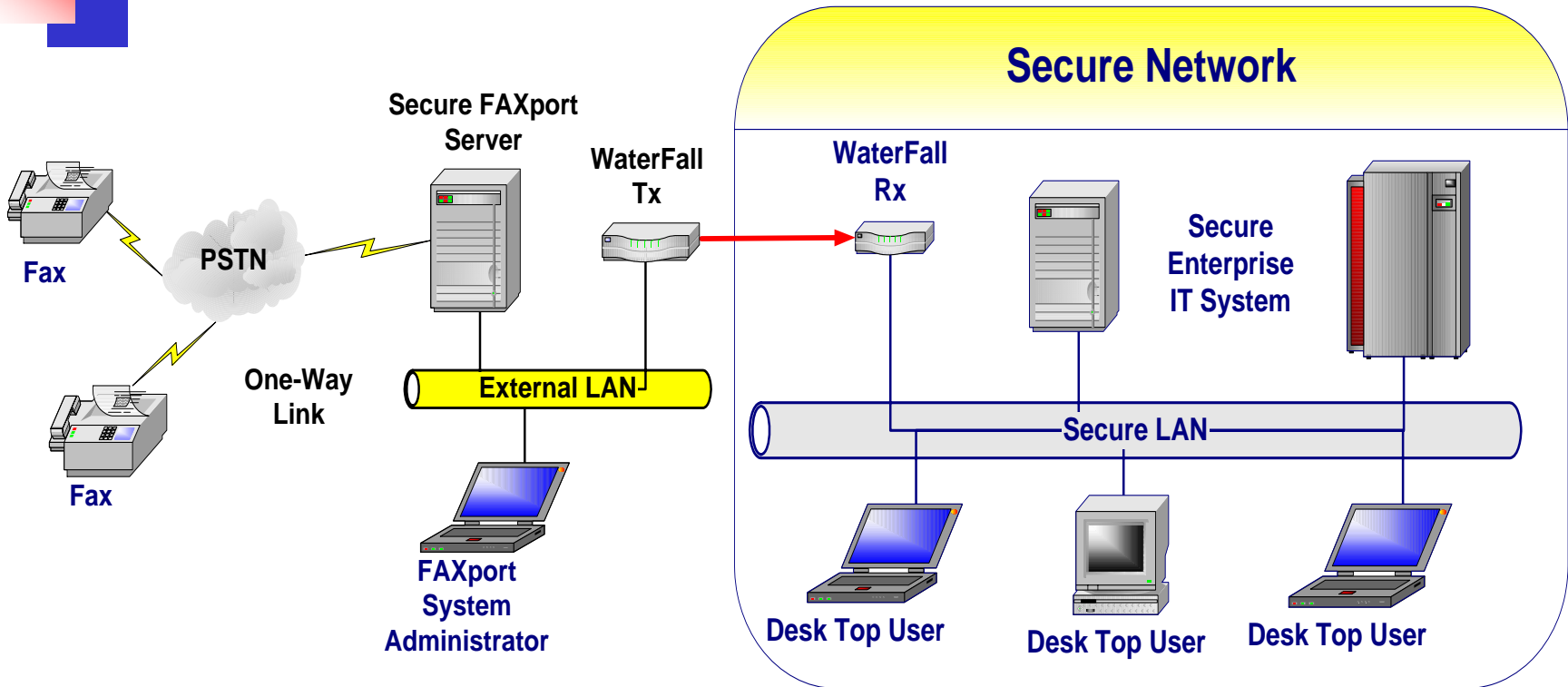
Faxes can be sent automatically from the enterprise Legacy systems, and any CRM & ERP application.

Remote Printing



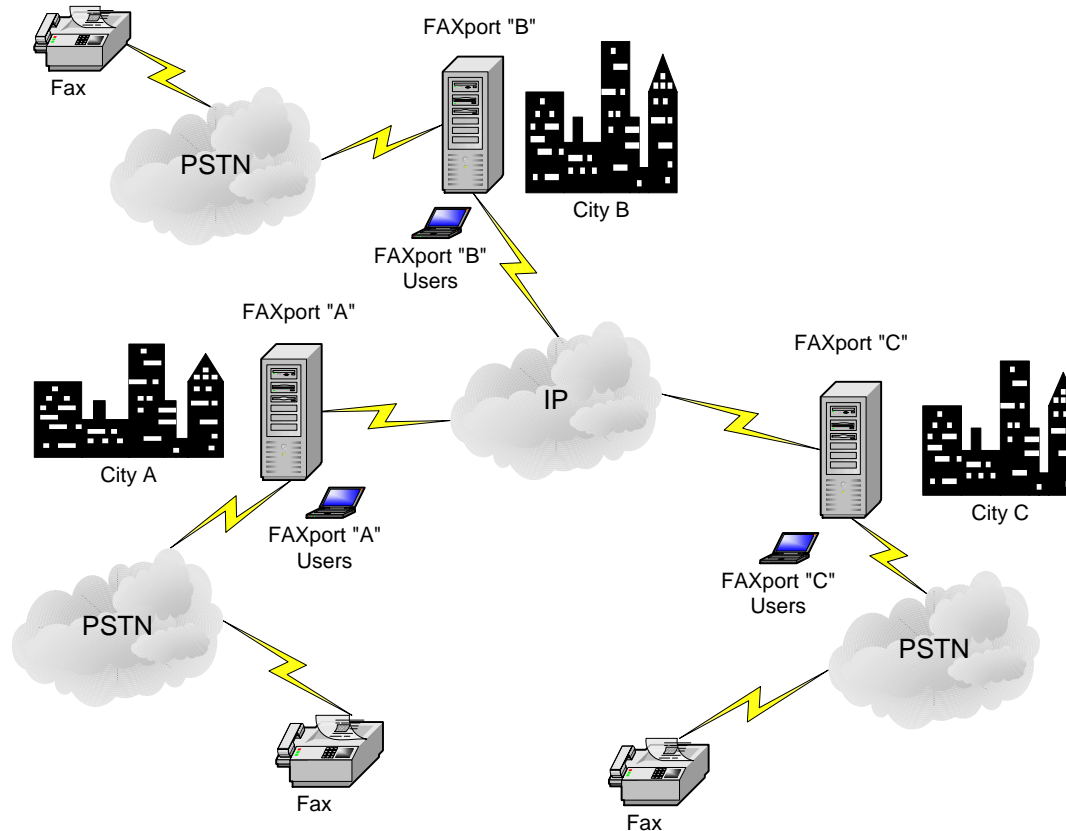
FAXport offers comprehensive printing solutions from wireless devices to any fax machine, when powered by SMSport.

FAXport for Secure Networks




All the benefits of a fax server, without breaching of network security.

Fax Over IP



Faxes are sent through the enterprise WAN, utilizing the Least Cost Routing function – Provides significant savings in long distance faxing

FAXport & Enterprise IT



Enterprise IT Resource	FAXport's Contribution
E-Mail	Exchange & Lotus Notes Connector Fax to E-Mail E-Mail to Fax
Internet	Fax Over IP
PSTN (Telephony)	Fax Server standard features
ERP / CRM	Automatic delivery of business critical documents (SAP, Oracle, etc)
BPA / BPM	Inbound & Outbound fax platform
Security	Fax Server for highly secure networks
Mobile User	Remote printing
Multifunction machines	Send fax without the need for a telephone line (security feature)
External Use	Fax Broadcasting

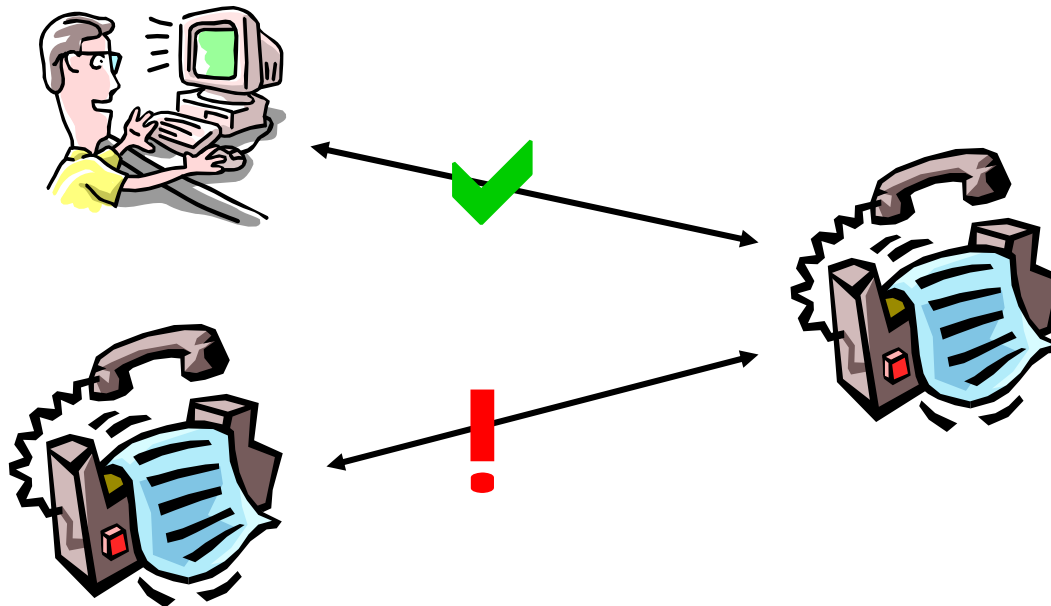
FAXport integrated with the most common enterprise applications, and is part of everyday activities.

API to External Applications



An extensive set of powerful APIs allow complete integration of fax functionality into almost any Windows or Web-based application.

Fax Machine Vs Fax Server



faxing via Fax Server is significantly beneficial to the user and the organization, than faxing via Fax Machines !

Savings With FAXport

All Figures are in \$US	Fax Machine	FAXport
Outbound Faxes		
Labor cost to fax each document (calculated on 5 minutes per fax)	0.75	0
Consumables costs (calculated on 2.5 cents per B&W page)	0.05	0
Telecommunications costs (calculated on 5 cents per fax)	0.05	0.05
Total cost per document	0.85	0.05
Daily outbound Faxing cost (100 faxes)	85.00	5.00
Inbound Faxes		
Labor cost to deliver each fax document (calculated on 5 minutes per fax)	0.75	0
Consumables (calculated on 2.5 cents per B&W page)	0.05	0
Total cost per document	0.80	0
Daily inbound faxing cost (100 faxes)	80.00	0
Total Daily Cost	165.00	5.00
Total Monthly Cost	3,795	115.00
Monthly Savings with FAXport		3,680

Assumption: 100 Outbound faxes
100 Inbound faxes Daily.




ROI with FAXport

Total Number of incoming and outgoing faxes per day	Annual savings (\$UD) with FAXport	The cost of FAXport server which supports the faxes volume	Return On Investment (in Months)
100	22,000	3,000	1.6
200	44,160	4,000	1.0
400	85,000	6,000	0.8



Company Profile

- 
- ❖ Provider of secure messaging, universal communications, mobile business solutions, enhanced printing systems, and enterprise fax.
 - ❖ Founded in Dec 2003.
 - ❖ Worldwide exclusive agreement with 3Com to sell and develop the FAXport product line – the products are installed in 35,000 sites.
 - ❖ OEM agreement with Xerox - FAXport was bundled with 250,000 Xerox machines, in years 2001-2004.

Uniport Products

- 
- ❖ **SecurePort** - Prevents leakage of sensitive documents from the organization via, e-mail, fax, printers, and removable media.
 - ❖ **PRINTport** - A secure enterprise print “Follow-Me” system, provides to the organization, security, savings, and print management.
 - ❖ **FAXport** – IP Fax Messaging System, including connectors to: E-mail, SAP, Production fax, Multifunction office machines, and mobile applications.
 - ❖ **SMSport** - Sends and receives SMS messages “to” and “from” mobile phones (e-mail, notifications, etc.).

Our Known Customers

- 
- A-Life Medical
 - Merrill Lynch
 - Alliance Insurance
 - American National Bank
 - Australian Water Services
 - Cable & Wireless
 - Cornell University
 - Credit Suisse First Boston
 - Dow Chemical Singapore
 - EDS Canada Inc.
 - Exxon Mobil
 - Hitachi Credit America Corp.
 - Metropolitan Bank
 - Morgan Stanley
 - Metropolitan Bank
 - Federal Reserve Bank
 - Nortel Networks
 - Northeast National Bank
 - Tel Aviv Stock Exchange
 - Telia AB
 - Ticketmaster
 - Time Warner Cable
 - US TODAY
 - U.S. Court of Appeals
 - Verizon
 - Wells Fargo

A decorative graphic consisting of three overlapping squares: a yellow one at the top, a red one to the left, and a blue one at the bottom.

We protect business-critical and secure documents more effectively and efficiently.

North America

CBE, Inc.

5 Cedar Springs Drive, Richmond Hill, Ontario, L4S 2B1 Canada

Tel: +1-905-883-8444

Fax: +1-905-883-3884

Israel Office

13 Hasadna St. P.O.BOX 2630

Raanana 43650, Israel

Tel: +972-9-743-5435

Fax:+972-9-743-5543

www.uni-port.com